

# SOILS & GEOLOGIC FEATURES MAP

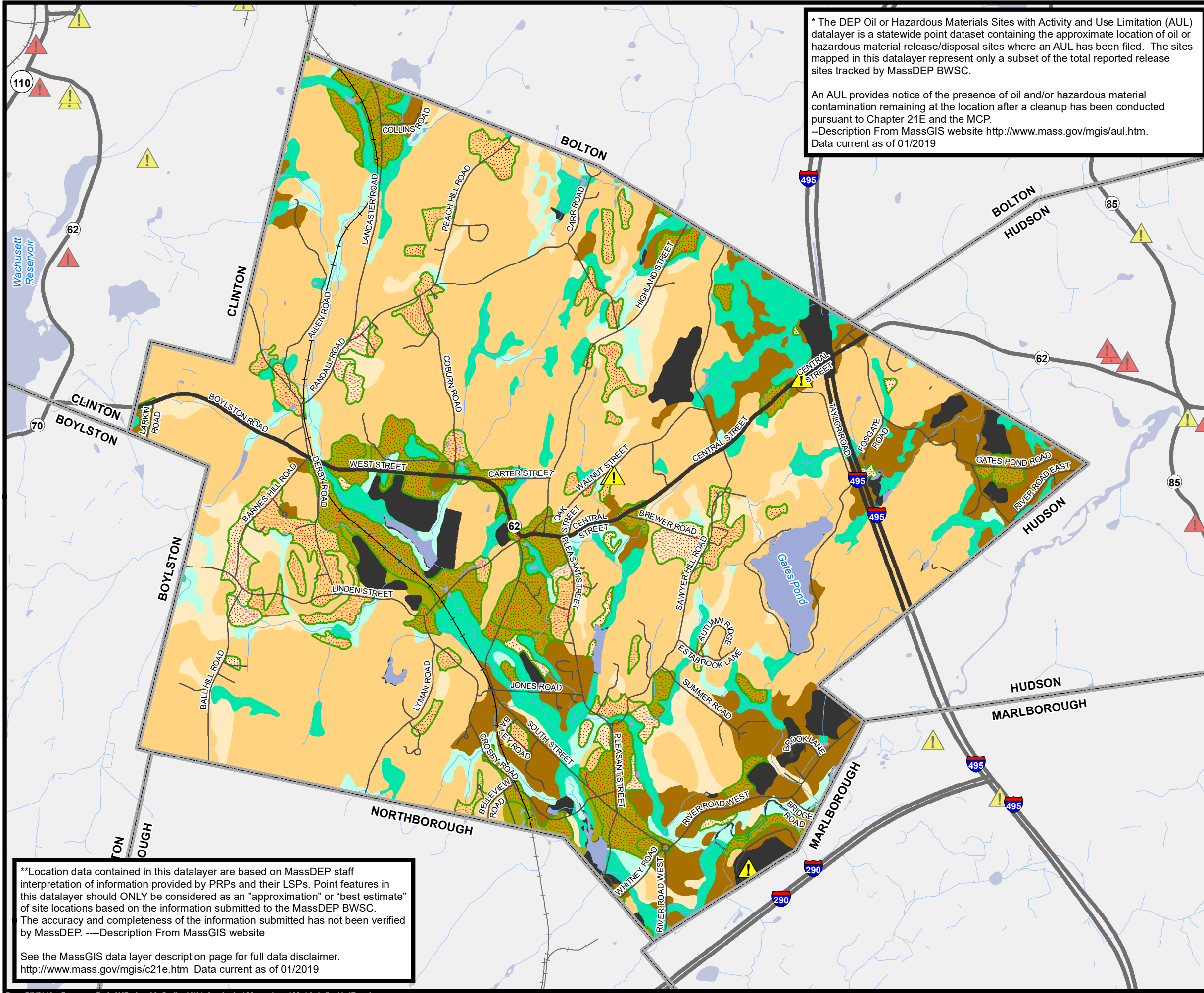
Town of Berlin, Massachusetts

OPEN SPACE AND RECREATION PLAN

\* The DEP Oil or Hazardous Materials Sites with Activity and Use Limitation (AUL) datalayer is a statewide point dataset containing the approximate location of oil or hazardous material release/disposal sites where an AUL has been filed. The sites mapped in this datalayer represent only a subset of the total reported release sites tracked by MassDEP BWSC.

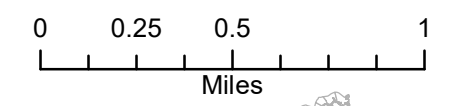
An AUL provides notice of the presence of oil and/or hazardous material contamination remaining at the location after a cleanup has been conducted pursuant to Chapter 21E and the MCP.

--Description From MassGIS website <http://www.mass.gov/mgis/aul.htm>.  
Data current as of 01/2019



### Legend

- Town Boundaries
- Major Road
- Local Road
- Active Railroad
- Water Bodies
- Streams
- AUL Location\*
- MassDEP Tier 21E Sites\*\*
- Prime Farmland Soils (NRCS Soils-WORC. NE)
- NRCS SSURGO-Certified Soils (WORC. NE)**  
(Dominant Drainage Class)
- Excessively drained
- Somewhat excessively drained
- Well drained
- Moderately well drained
- Poorly drained
- Very poorly drained
- Not Classified



Source: Data provided by the Town of Berlin, Central Massachusetts Regional Planning Commission (CMRPC), massDOT and the Office of Geographic Information (MassGIS), Commonwealth of Massachusetts, Information Technology Division.

Information depicted on this map is for planning purposes only. This information is not adequate for legal boundary definition, regulatory interpretation, or parcel level analysis. Use caution interpreting positional accuracy.

Produced by  
 CMRPC  
 Center Massachusetts Regional Planning Commission

\*\*Location data contained in this datalayer are based on MassDEP staff interpretation of information provided by PRPs and their LSPs. Point features in this datalayer should ONLY be considered as an "approximation" or "best estimate" of site locations based on the information submitted to the MassDEP BWSC. The accuracy and completeness of the information submitted has not been verified by MassDEP. ----Description From MassGIS website

See the MassGIS data layer description page for full data disclaimer.  
<http://www.mass.gov/mgis/c21e.htm> Data current as of 01/2019